

FALL 2011

Friends

THE NEWSLETTER OF

Friends OF THE
Center
FOR THE
Arts

A MESSAGE FROM THE PRESIDENT OF THE FRIENDS OF THE CENTER FOR THE ARTS



Pat Carroll

Welcome back to another great season at the Center for the Arts (Center). Once again the Center is presenting an outstanding array of artists from the worlds of dance, music, drama and song, representing classical, pop, folk, jazz and modern genres. There are performances to please every taste, and we hope you will savor them often.

Friends of the Center for the Arts (FCFA) are performing arts lovers like you who recognize that the quality of performances offered at the Center cannot be sustained through ticket sale proceeds alone. FCFA exists to provide both volunteer and financial support to the Center. I am pleased to announce that FCFA membership is at its highest level ever. Like most other costs, the cost to produce and operate a season of premier events at the Center continues to rise. A small increase in giving by all members would provide a big boost towards filling the gap created by rising costs.

In recent issues of FCFA newsletters (both print and e-mail editions) we have discussed a variety of ways to increase your contribution. Stepping up one or more membership levels is one of the best methods to increase the impact of FCFA's work and members also receive increased

benefits such as complimentary parking passes, tickets to Mason student performances, and invitations to master class activities. Monthly, quarterly or semi-annual payment plans allow you to fit your giving to your own schedule. Planned giving through estate planning is another option. You may receive guidance for planned giving at George Mason University by calling Ms. Una Murphy at 703-993-8621.

Often overlooked are painless ways to increase your contribution without writing a check. A gift of appreciated stock gives the donor a charitable gift tax deduction equal to the current value of the stock while entirely avoiding any capital gains tax. Many corporations (IBM, ExxonMobil, Fannie Mae, Verizon and Home Depot are but a few) match charitable gifts by employees and retirees, allowing them to double their contribution. Holders of IRA accounts may make federal-income-tax-free qualified charitable distributions. This is especially attractive to those who must take required minimum distributions which would otherwise be taxable. This latter strategy is scheduled to expire at the end of 2011.

I hope you will consider increasing your contribution this season through one of these methods. Please take advantage of the many opportunities to volunteer with FCFA. I look forward to seeing you at one of the Friends special events this season!

In This Issue

A MESSAGE FROM THE
PRESIDENT
1

RUSSIA'S CRITICALLY
ACCLAIMED
MARIINSKY ORCHESTRA
PRESENTED A PROGRAM OF
TCHAIKOVSHY SYMPHONIES

UPCOMING
FRIENDS EVENTS
2

MARTHA GRAHAM'S
MODERN MASTERPIECES!

FRIENDS AT PLAY
3

CALENDAR OF EVENTS
4

<http://cfa.gmu.edu/friends/>

Russia's critically acclaimed Mariinsky Orchestra presented a program of Tchaikovsky Symphonies

The October 8th performance featured a concerto performed by Russian pianist, Daniil Trifonov, the XIV Tchaikovsky Competition winner, and Tchaikovsky's Symphony No. 5. The orchestra began their world tour in Europe in July, and opened Carnegie Hall's 120th season on October 5th. They will return to Carnegie Hall and then present concerts on the West Coast and Canada before concluding the tour in Europe in December.

The orchestra, formerly known as the Kirov Orchestra, is led by Valery Gergiev, who is one of the most sought-after conductors in the world today. The orchestra was founded in the 18th century during the reign of Peter the Great, and was known as the Russian Imperial Opera Orchestra before the revolution. By 1917 the orchestra's name changed to the Royal Imperial Theatre Orchestra, and was regarded as St. Petersburg's leading symphony orchestra. During

the Soviet era, it was renamed the Kirov Opera. In 1988, Gergiev was elected Artistic Director of the Kirov Opera and in 1996 the Russian Government appointed him as Artistic and General Director of the Mariinsky Theatre. Soon after the city of Leningrad reverted to its original name of St. Petersburg in 1991 (Leningrad since 1924), the Kirov Theatre reverted to its original title of the Mariinsky Theatre, home to the Kirov Opera, the Kirov Ballet, and the Kirov Orchestra. The orchestra celebrates its 228th Anniversary this year, making it one of the oldest musical institutions in Russia.

The success of the Orchestra's frequent tours has resulted in its being referred to as "the world's first global orchestra." It debuted in the U.S. in 1992, and since then has made 15 tours of North America, including appearances in the Kennedy Center and the Center for the Arts. A review in *The New York Times* noted, "The gripping performances these musicians from St. Petersburg offered had such intensity, character and insight that it was hard to imagine music played with more authority."



Mariinsky Orchestra

Upcoming Friends Events for the 2011/2012 Great Performances at Mason Season

DO WE HAVE YOUR CURRENT EMAIL ADDRESS?

The Friends of the Center for the Arts frequently use email to communicate with its members. Next time you are at the Friends Refreshment area, please check the binder to see if we have your current email address. You may also send your current email address to dpaez@gmu.edu. We do not share email addresses.

On Sunday, November 6 at 4:00 p.m. the all-string Chamber Orchestra Kremlin, composed of 16-18 youthful, virtuosic musicians will perform at the Center for the Arts Concert Hall. During one of the Chamber Orchestra Kremlin's tours of the U.S. since they were formed in 1991, an American critic commented: "Whether the music needed dash, elegance, surging melody or a gossamer pianissimo, conductor Misha Rachlevsky and his players produced it. And they made it sound simple." The Chamber Orchestra Kremlin's performance will be followed by a dinner event on Grand Tier III hosted by FCFA.

The second "Artists in Conversation" event of the season will be held in conjunction with the performance of Dailey & Vincent on December 3. Nominated for a 2011 Grammy award in the country music category for their remake of "Elizabeth," from their tribute to the Statler Brothers album, Jamie Dailey and Darrin Vincent are bluegrass artists. Although they didn't win the country music award, they remain kings in the bluegrass world. They've won entertainer of the



Dailey & Vincent



Aquila Theatre - Hon. Gwendolen Fairfax (Gabriela Fernandez-Coffey) and Cecily Cardew (Lindsay Rae Taylor)

year at the International Bluegrass Music Association Awards for the past three years and performed at the CMA Music Festival in Nashville this June.

Another "Artists in Conversation" event will discuss the Aquila Theatre's production of Shakespeare's *Macbeth* on January 28. Aquila Theatre, a frequent visitor at the Center for the Arts, was founded in London 20 years ago, has been based in New York since 1999, and is "dedicated to the reinterpretation of classical drama." In this year's national tour they are also presenting Oscar Wilde's classic comedy *The Importance of Being Earnest*, which appeared on October 9 at the Center for the Arts. The *New York Times* has called them "a classically trained, modernly hip troupe."

Please note that "Artists in Conversation" events are usually held a day or two prior to the performance. Artists in Conversation events are offered exclusively to Friends of the Center for the Arts and provide an opportunity for members to gain knowledge and insight about an upcoming performance with a guest artist. These lively conversations are often held in private homes as well as on campus.

Martha Graham's Modern Masterpieces



Martha Graham Dance Company

The Martha Graham Dance Company celebrated its 85th anniversary season at the Center for the Arts on October 11th. The company, founded by legendary dancer and choreographer Martha Graham (1894-1991), presented an extraordinary evening of American modern dance. The program opened with *Prelude and Revolt*, a multimedia work that intertwined live performances of Graham's early creations with film clips, photos and narration. The program also presented *Lamentation*, a soul-baring solo danced to one of Zoltán Kodály's piano scores; *Lamentation Variations*, a trio of new works inspired by the original piece; and *Panorama*, which expresses the power of the people to bring about change.

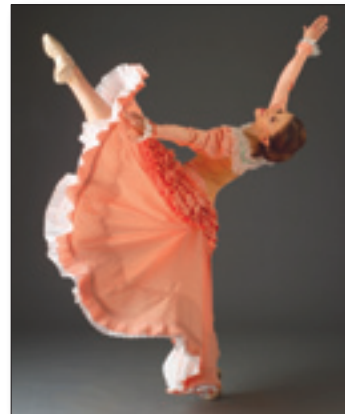
The performance concluded with Graham's iconic ballet masterpiece *Appalachian Spring*, an ode to America's frontier spirit featuring music composed by Aaron Copeland and a set designed by sculptor Isamu Noguchi. *Appalachian Spring* premiered in 1944 in Washington, D.C. with Graham dancing the lead role. Committed to preserving its founder's

legacy, the company continues to demonstrate Graham's groundbreaking techniques, unmistakable style and penchant for unique collaborations.

"In 2007, the Martha Graham Dance Company was part of our *Great Performances at Mason Season* and members of the company were very impressed with Mason dance students whom they worked with in a master class," says Tom Reynolds, Director of Artistic Programming for the Center for the Arts at George Mason University. "When I approached the company about returning for another performance in the 2011/2012 *Great Performances at Mason Season*, the Martha Graham Dance Company suggested including *Panorama*, a piece that Graham created for young dancers in 1925."

Denise Vale, the Martha Graham Dance Company's Senior Artistic Director and former principal dancer, spent five days in Fairfax auditioning, casting and teaching the work's athletic choreography to Mason dancers. Intensive rehearsals continued for several additional weeks culminating in a history-making performance on October 21st.

Martha Graham's impact on dance is often compared to that of Picasso's on painting, Stravinsky's on music, and Frank Lloyd Wright's on architecture. Graham's contributions transformed the art form and Graham's company has nurtured many of the leading choreographers and dancers of the 20th and 21st century.

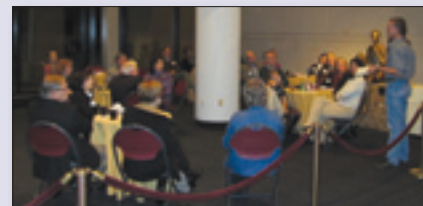


Martha Graham Dance Company



Friends at Play

Artists in Conversation event on the Martha Graham Dance Company's Great Performances appearance with the Mason Dance Company led by School of Dance Professor Dan Joyce
Thursday, October 20 at 6 pm at the Center for the Arts



Friends enjoying conversation with Prof. Dan Joyce



(from left to right) Katherine Wilson and Reagan Johnson



(from left to right) Susanne Zumbro, Mindy Sims, Joan White, Sonja Palomaki



(from left to right) Dan Joyce, Phil Rivers, Don Palomaki

Friends OF THE Center FOR THE Arts

Center for the Arts
George Mason University
4400 University Drive, MS 4C1
Fairfax, VA 22030

Non-Profit
U.S. Postage
PAID
Permit No. 339
Winchester, VA

For more information
please call 703-993-4188
or visit <http://cfa.gmu.edu/friends/>

2011/2012 FCFA OFFICERS

Pat Carroll
President

Sonja Palomaki
Vice President for Events

Paulette Miller
Interim Vice President for Membership

Eloise Stinger
Vice President for Communications

Gordon Canyock
Secretary

Walt Smith
Budget Officer

FCFA COMMUNICATIONS COMMITTEE

Gordon Canyock
A.J. Driscoll
Barbara Jacksier
Walt Smith
Eloise Stinger
Bob Warakomsky

FCFA PHOTOGRAPHERS & NOTETAKERS

Dan Feighery
Rita Flickinger
Rita Leake
Vyacheslav and Valentina Lukin
O. Louis Mazzatenta
Don Palomaki
William Tompkins

FALL 2011 GREAT PERFORMANCES AT MASON

November | December

Friday, Nov. 4	8 p.m.	Pilobolus Dance Company
Sunday, Nov. 6	4 p.m.	Chamber Orchestra Kremlin, <i>Misha Rachlevsky, conductor</i>
Sunday, Nov. 13	7 p.m.	The Miles Davis Experience: 1949-1959 A Collaboration with Blue Note Records
Friday, Nov. 18	8 p.m.	National Acrobats of the People's Republic of China, <i>direct from Beijing</i>
Saturday, Nov. 19	2 p.m.	National Acrobats of the People's Republic of China, <i>direct from Beijing</i>
Saturday, Nov. 19	8 p.m.	National Acrobats of the People's Republic of China, <i>direct from Beijing</i>
Saturday, Nov. 26	8 p.m.	Chanticleer, <i>A Chanticleer Christmas</i>
Friday, Dec. 2	8 p.m.	Virginia Opera, <i>Hansel and Gretel</i>
Saturday, Dec. 3	8 p.m.	Dailey & Vincent, <i>I Believe in Christmas</i>
Sunday, Dec. 4	2 p.m.	Virginia Opera, <i>Hansel and Gretel</i>
Friday, Dec. 9	8 p.m.	American Festival Pops Orchestra, <i>Holiday Pops, Anthony Maiello, conductor</i>
Saturday, Dec. 10	8 p.m.	George Winston, <i>The Winter Show</i>
Saturday, Dec. 17	8 p.m.	Natalie MacMaster, <i>Christmas in Cape Breton</i>
Sunday, Dec. 18	4 p.m.	Mariachi Los Camperos de Nati Cano, <i>Fiesta Navidad</i>